

# PRODUCT INFORMATION PACKET

Model No: 056H17T5302

Catalog No: Y535

1 HP Variable Speed Motor, 3 phase, 1800 RPM, 230/460 V, 56C Frame, TENV  
1000:1 Speed Ratio Motors



Regal and Marathon are trademarks of Regal Beloit Corporation or one of its affiliated companies.

©2021 Regal Beloit Corporation, All Rights Reserved. MC017097E

REGAL



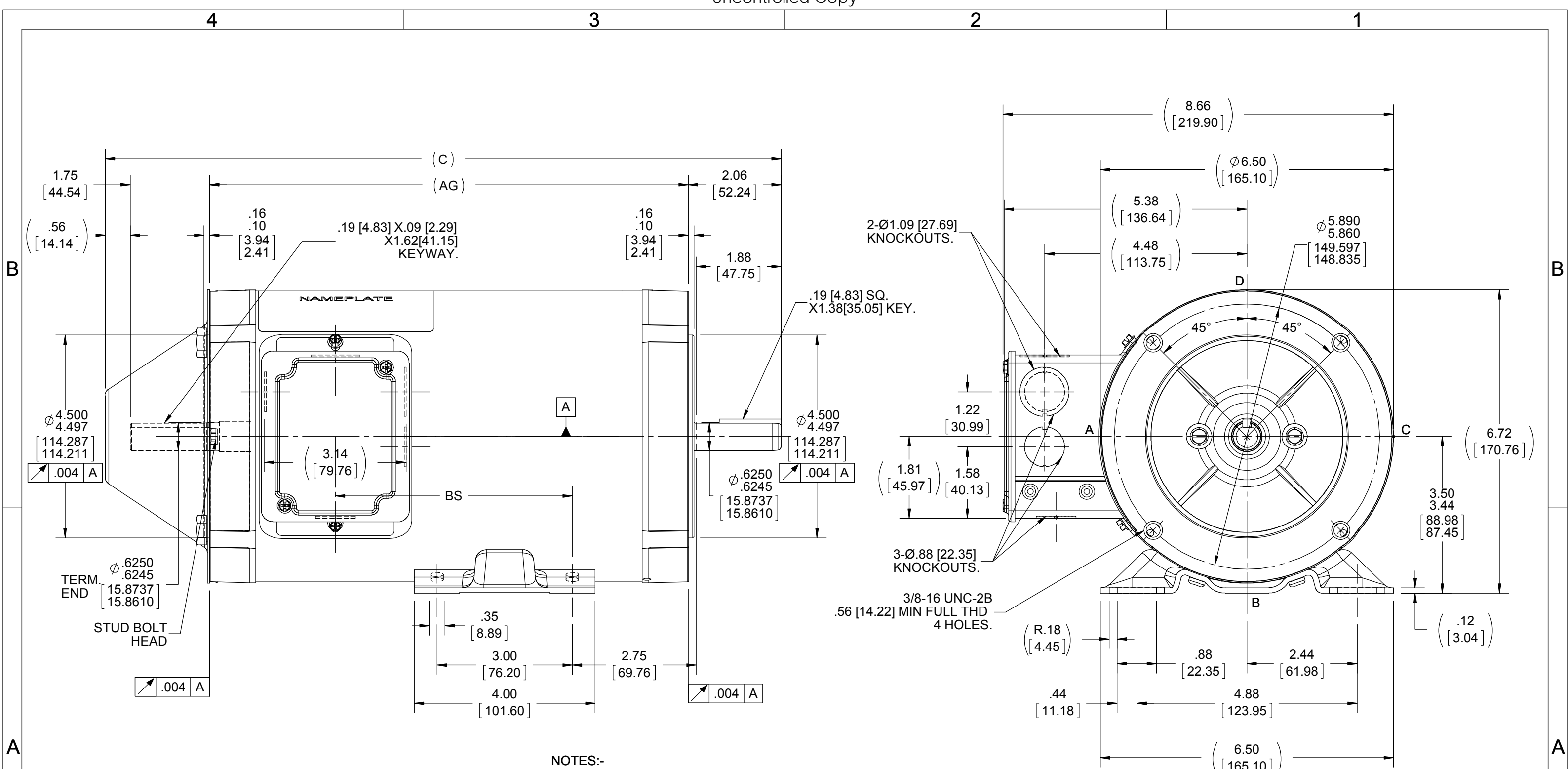
### Nameplate Specifications

Output HP	1 Hp	Output KW	0.75 kW
Frequency	60 Hz	Voltage	230/460 V
Current	3.0/1.5 A	Speed	1725 rpm
Service Factor	1	Phase	3
Efficiency	84 %	Power Factor	75
Duty	Continuous	Insulation Class	F
Design Code	INV	KVA Code	P
Frame	56C	Enclosure	Totally Enclosed Non Ventilated
Thermal Protection	Thermostats (N/C)	Ambient Temperature	40 °C
Drive End Bearing Size	6203	Opp Drive End Bearing Size	6203
UL	Recognized	CSA	Y
CE	Y	IP Code	43

### Technical Specifications

Electrical Type	Squirrel Cage Inverter Duty	Starting Method	Inverter Only
Poles	4	Rotation	Reversible
Resistance Main	13.5 Ohms	Mounting	Bolt-on Base
Motor Orientation	Horizontal	Drive End Bearing	Ball
Opp Drive End Bearing	Ball	Frame Material	Rolled Steel
Shaft Type	NEMA 56	Overall Length	14.98 in
Frame Length	8.56 in	Shaft Diameter	0.625 in
Shaft Extension	2.06 in	Assembly/Box Mounting	F1 ONLY
Outline Drawing	B-108747-856	Connection Drawing	A-EE7308T

This is an uncontrolled document once printed or downloaded and is subject to change without notice. Date Created:06/28/2021



- NOTES:-  
 1) REMOVABLE BASE.  
 2) CONDUIT BOX CAN BE ROTATED 180°  
 3) "C" FACE MOUNTING PATTERN TYPICAL BOTH ENDS.  
 4) NAMEPLATE READ FROM "C" BOX SIDE.

DASH	"C"	"AG"	"BS"
856	14.98 [380.49]	10.61 [269.49]	5.25 [133.35]

DRAWING REVISION A	REVISION BY S SAHOO	DATE 02/19/2019
ECO ECO-0162621	APPROVED BY D SURYAWANSHI	DATE 02/28/2019
ECO DESCRIPTION <b>OUTLINE CONVERSION PROJECT</b> COPYRIGHT REGAL BELOIT AMERICA, INC. ALL RIGHTS RESERVED. PROPRIETARY AND CONFIDENTIAL INFORMATION - THIS DOCUMENT IS THE PROPERTY OF REGAL BELOIT AMERICA, INC. ("OWNER") AND CONTAINS OWNER'S PROPRIETARY INFORMATION. ANY PERSON, CORPORATION OR OTHER FIRM RECEIVING IT IS DEEMED, BY RECEIVING IT, TO AGREE THAT IT, AND/OR ANY PART OF IT, SHALL NOT BE DISCLOSED TO ANY PERSON, CORPORATION OR OTHER ENTITY, DUPLICATED, AND/OR USED, EXCEPT AS EXPRESSLY APPROVED IN WRITING IN ADVANCE BY OWNER. THIS DOCUMENT SHALL BE RETURNED TO OWNER UPON REQUEST. IT MAY BE SUBJECT TO CERTAIN RESTRICTIONS UNDER APPLICABLE EXPORT CONTROL LAWS AND REGULATIONS.		

TOLERANCES UNLESS OTHERWISE SPECIFIED:

DEC.	INCH	mm	ANGLE
X	±0.1	[±2.5]	±7° 30"
.XX	±0.03	[±0.76]	
.XXX	±0.005	[±0.127]	
.XXXX	±0.0005	[±0.0127]	

REMOVE BURRS & BREAK SHARP EDGES: .003/.015 [0.076/.381] X 45°  
 CORNER FILLETS: R.02 [0.51]  
 MACHINED SURFACES: 200 INCH/mm 5.1  
 mm SHOWN IN [BRACKETS]

DRAWN BY S SAHOO	DATE 02/19/2019
APPROVED BY D SURYAWANSHI	DATE 02/28/2019
REFERENCE 104043	THIRD ANGLE PROJECTION

Regal Beloit America, Inc.	
DESCRIPTION <b>OUTLINE</b> 56 FR.-TENV-BB-DBL."C" FACE	
MATERIAL	PROCESS/FINISH
SIZE B	DRAWING NUMBER 108747
SHEET 1 OF 1	

**HIGH VOLTAGE**



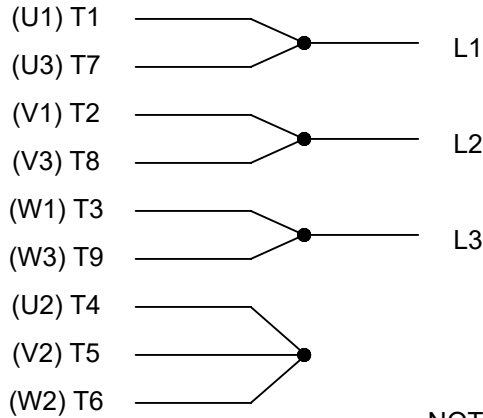
**THREE PHASE  
DUAL VOLTAGE MOTOR**

THERMO-PROTECTORS  
CONNECTED IN SERIES



**NOTE FOR FACTORY USE ONLY:  
TO SURGE TEST FOR COMMON CONNECT:  
HIGH VOLT: CONNECT P1 TO T1  
THEN P2 TO L1  
LOW VOLT: CONNECT P1 TO T1 & T7,  
THEN P2 TO L1**

**LOW VOLTAGE**



**VIEW OF TERMINAL END**

**NOTE: LEAD'S COLOR CAN BE YELLOW OR WHITE FOR MT2 PLANT**

DRAWING REVISION <b>T</b>	REVISION BY <b>ZR</b>	DATE <b>01-14-2019</b>		DRAWN BY <b>SMC</b>	Regal Beloit America, Inc.	
ECO <b>ECO-0159915</b>	APPROVED BY <b>DR</b>	DATE <b>01-15-2019</b>		DATE <b>05-13-1992</b>		DESCRIPTION <b>CONN DIAGRAM-INTERNAL</b>
ECO DESCRIPTION <b>ADDED TERMINAL CONNECTION DIAGRAM</b>				APPROVED BY <b>TB</b>	<b>3 PHASE - DUAL VOLTAGE MOTOR</b>	
<small>COPYRIGHT REGAL BELOIT AMERICA, INC. ALL RIGHTS RESERVED. PROPRIETARY AND CONFIDENTIAL INFORMATION - THIS DOCUMENT IS THE PROPERTY OF REGAL BELOIT AMERICA, INC. ("OWNER") AND CONTAINS OWNER'S PROPRIETARY INFORMATION. ANY PERSON, CORPORATION OR OTHER FIRM RECEIVING IT IS DEEMED, BY RECEIVING IT, TO AGREE THAT IT, AND/OR ANY PART OF IT, SHALL NOT BE DISCLOSED TO ANY PERSON, CORPORATION OR OTHER ENTITY, DUPLICATED, AND/OR USED, EXCEPT AS EXPRESSLY APPROVED IN WRITING IN ADVANCE BY OWNER. THIS DOCUMENT SHALL BE RETURNED TO OWNER UPON REQUEST. IT MAY BE SUBJECT TO CERTAIN RESTRICTIONS UNDER APPLICABLE EXPORT CONTROL LAWS AND REGULATIONS.</small>			DATE <b>05-13-1992</b>	MATERIAL		
						REFERENCE <b>EE7308/EE7300</b>
			THIRD ANGLE PROJECTION			

CERTIFICATION DATA SHEET

Model#: 56H17T5302 E WINDING#: ZT472 TR 3  
 CONN. DIAGRAM: A-EE7308T ASSEMBLY: F1 ONLY  
 OUTLINE: A-104043-856

TYPICAL MOTOR PERFORMANCE DATA

HP	KW	SYNC. RPM	F.L. RPM	FRAME	ENCLOSURE	KVA CODE	DESIGN
1	.75	1800	1725	56C	TENV	P	INV

PH	Hz	VOLTS	FL AMPS	START TYPE	DUTY	INSL	S.F	AMB°C	ELEVATION
3	60	230/460	3/1.5	INVERTER ONLY	CONTINUOUS	F3	1.0	40	3300

FULL LOAD EFF: 84	3/4 LOAD EFF: 82.5	1/2 LOAD EFF: 78.5	GTD. EFF	ELEC. TYPE	NO LOAD AMPS
FULL LOAD PF: 75	3/4 LOAD PF: 65.5	1/2 LOAD PF: 51	81.5	SQ CAGE INV DUTY	2 / 1

F.L. TORQUE	LOCKED ROTOR AMPS	L.R. TORQUE	B.D. TORQUE	F.L. RISE°C
3 LB-FT	30 / 15	10.8 LB-FT 360	15 LB-FT 500	65

SOUND PRESSURE @ 3 FT.	SOUND POWER	ROTOR WK^2	MAX. WK^2	SAFE STALL TIME	STARTS / HOUR	APPROX. MOTOR WGT
62 dBA	72 dBA	0.11 LB-FT^2	0 LB-FT^2	0 SEC.	0	39 LBS.

EQUIVALENT WYE CKT.PARAMETERS (OHMS PER PHASE)

R1	R2	X1	X2	XM
8.378	5.6232	10.7068	9.9116	278.036

RM	ZREF	XR	TD	TD0
11132.8	284	1.7	0.0071	0.136

\*\*\* SUPPLEMENTAL INFORMATION \*\*\*

DE BRACKET TYPE	ODE BRACKET TYPE	MOUNT TYPE	ORIENTATION	SEVERE DUTY	HAZARDOUS LOCATION	DRIP COVER	SCREENS	PAINT
C-FACE	BRAKE OR ENCODER	BOLT-ON	HORIZONTAL	FALSE	NONE	FALSE	NONE	BLACK (POWDER)

BEARINGS		GREASE	SHAFT TYPE	SPECIAL DE	SPECIAL ODE	SHAFT MATERIAL	FRAME MATERIAL
DE	OPE	POLYREX EM	STANDARD 56	NONE	NONE	1144 STRESSPROOF (C-223)	ROLLED STEEL
BALL	BALL						
6203	6203						

THERMO-PROTECTORS				THERMISTORS	CONTROL	SPACE /n HEATERS
THERMOSTATS	PROTECTORS	WDG RTDs	BRG RTDs	NONE	FALSE	NONE VOLTS
TSTATS (N/C)	NOT	NONE	NONE			

If Inverter equals NONE, contact factory for further information

INVERTER TORQUE: CONSTANT 1000:1 INV. HP SPEED RANGE: 2.0 X BASE SPEED
ENCODER: PROVISIONS ONLY NORTHSTAR ST56 NONE NONE PPR
BRAKE: PROVISIONS ONLY NONE

\*  
N  
O  
T  
E  
S  
\*

STEARNS	P/N	NONE	
56,000	NONE		
10 FT-LB	NONE V	NONE Hz	

DATE: 06/28/2017 02:08:32 AM  
FORM 3531 REV.3 02/07/99  
\*\* Subject to change without notice.

Data Sheet

Date: 8/22/2017  
 Customer: \_\_\_\_\_  
 Attention: \_\_\_\_\_  
 Submitted by: VINAYAK YERATE



56H17T5302

Submittal

Data @ 460 V

Motor Load Data

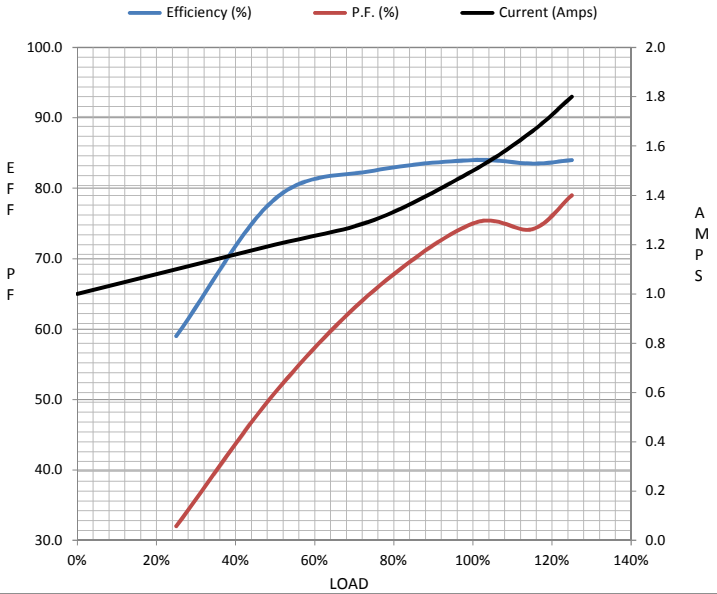
Load	0%	25%	50%	75%	100%	115%	125%	LR
Current (Amps)	1.00	1.10	1.20	1.30	1.50	1.66	1.80	15.0
Torque (ft-lb)	0.00	0.75	1.50	2.20	3.0	3.4	3.7	10.8
RPM	1800	1788	1778	1765	1750	1,747	1740	0
Efficiency (%)		59.0	78.5	82.5	84.0	83.5	84.0	
P.F. (%)	12.0	32.0	51.0	65.5	75.0	74.2	79.0	69.0

Motor Speed Data

	LR	Pull-Up	BD	Rated	Idle
Speed (RPM)	0	700	1300	1750	1800
Current (Amps)	15.0	12.5	8.2	1.50	1.00
Torque (ft-lb)	10.8	9.5	15.0	3.0	0.00

Information Block

HP	1.0			
Sync. RPM	1800			
Frame	56			
Enclosure	TENV			
Construction	TTR			
Voltage	230/460 V			
Frequency	60 Hz			
Design	A			
LR Code letter	P			
Service Factor	1.15			
Temp Rise @ FL	65 °C			
Duty	CONT			
Ambient	40 °C			
Elevation	1,000 feet			
Rotor/Shaft wk <sup>2</sup>	0.11 Lb-Ft <sup>2</sup>			
Ref Wdg	ZT472 TR			
Sound Pressure @ 1M	62 dBA			
VFD Rating	CONSTANT 1000:1			
Outline Dwg	A-104043-856			
Conn. Diag	A-EE7308T			
Additional Specifications:				
0				
0				
EQUIV CKT (OHMS / PHASE)				
R1	R2	X1	X2	Xm
8.3780	5.6230	10.7070	9.9120	278.0360



Speed - Torque Curve

