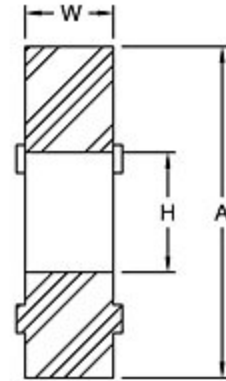
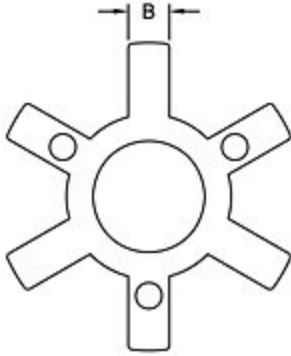




**Lovejoy, Inc.**  
 2655 Wisconsin Avenue  
 Downers Grove, IL 60515  
**Phone:** 630-852-0500 • **Fax:** 630-852-2120  
**E-Mail:** [info@lovejoy-inc.com](mailto:info@lovejoy-inc.com) • **Web site:** [www.lovejoy-inc.com](http://www.lovejoy-inc.com)

### Item # 68514411486, L Type Spiders - Open Center

The L Type coupling consists of two standard L Type hubs and one spider.



[Specifications](#) · [Dimensional Data](#) · [Performance Data](#) · [Spider Performance](#) · [Elastomers in Compression](#)

#### Specifications

<b>Description</b>	L/AL099/100 SPDR HY OCT1-1/32
<b>Coupling Type</b>	Jaw
<b>Material</b>	Hytrel®
<b>Insert Style</b>	Open Center
<b>Color</b>	Tan
<b>Type</b>	Elastomeric Insert
<b>Weight</b>	0.06 lb

#### Dimensional Data

<b>Coupling Size</b>	L099, L100, AL099, AL100
<b>Dimension A</b>	2.540 in 64.52 mm
<b>Dimension B</b>	0.430 in 10.92 mm
<b>Dimension H</b>	1.030 in 26.16 mm
<b>Dimension W</b>	0.61 in 15.49 mm
<b>Cubic inches</b>	3.93548 in <sup>3</sup>

## Performance Data

<b>Normal Temperature Range</b>	-60 to 250 °F -51 to 121 °C
<b>Nominal Torque</b>	792 to 1134 in·lb 89.5 to 128 N·m
<b>Angular Misalignment</b>	0.50 °
<b>Parallel Misalignment</b>	0.150 in
<b>Shore Hardness</b>	55D
<b>Damping Capacity</b>	Low
<b>Chemical Resistance</b>	Excellent

## Spider Performance

- HytreI is a flexible elastomer designed for high torque and high temperature operations. HytreI can operate in temperatures of -60° to 250° F (-51° to 121° C) and has an excellent resistance to oil and chemicals. Not recommended for cyclic or start/stop applications.

## Elastomers in Compression

Lovejoy offers four types of elastomer designs to allow for additional flexibility in addressing specific application requirements. One piece designs are used in the "L" and "AL" models (referred to as spiders) and multiple part "load cushions" are used in the "C" and "H" model couplings. The load cushions are in sets of 6 to 14 pieces depending on coupling size.

### Solid Center Spider

- The solid center design is commonly used design when shafts of the driver and driven equipment can be kept separate by a standard gap

### Open Center Spider

- The open center design allows for the shafts of the driver and driven to be positioned within a short distance
- Open center spiders offer shaft positioning flexibility but have a lower RPM capacity (1,750 RPM maximum for NBR, 3,600 maximum for Urethane/HytreI®)

### Cushions

- Used exclusively for the C and H Type couplings
- Load cushions are held in place radially by a steel collar which is attached to one of the hubs

### Snap Wrap Flexible Spider

- Design allows for easy removal of the spider without moving the hubs
- Allows for close shaft separation all the way up to the hubs maximum bore
- Maximum RPM is 1,750 RPM with the retaining ring, but if used with the LC Type (with collar) the normal RPM rating of the coupling applies
- Style is available in NBR and Urethane only, and in limited sizes